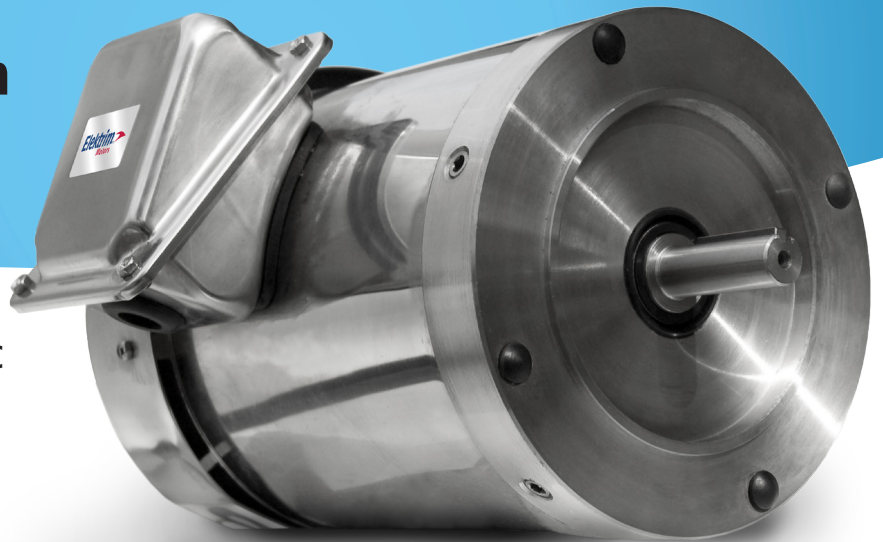


# STAINLESS STEEL WASHDOWN MOTORS

Remarkable All-In-One  
Wet and Corrosive  
Washdown Protection



**1/3-30HP 1PH & 3PH TEFC 60 Hz NEMA AC  
Footed & Footless Motors**

- Inverter Duty Rated: 3:1CT & 5:1VT (3-Phase only)
- Service Factor: 1.15
- Design: "B"
- Protection Degree: IP55 or IP56 (56C Frame)
- Enclosure: TEFC or TENV (Fractional 3PH)
- VPI process applied on 143TC and up
- C-Face without feet
- Class "F" insulation with Class "B" rise
- PTC140 thermistors standard 180 frame and up
- Continuous duty
- Sealed bearings
- Drive End (DE) locked bearing as standard
- Squirrel cage rotor
- 300 series stainless steel construction
- Anti-corrosion coating applied
- DE and NDE drain holes every 90°
- F1 assembly
- 12-Gauge puddle welded base
- NEMA Premium<sup>®</sup> efficient motors are double drilled
- CSA-US certified and CE marked
- Warranty: 1-Year



**CALL NOW**



Find Your Motor

Elektrim Motors  
2015 S. Mitchell Blvd.  
Schaumburg, IL 60193  
847-524-1074  
[www.elektrimmotors.com](http://www.elektrimmotors.com)

***BUILT TO PERFORM WHERE OTHERS FAIL***

